

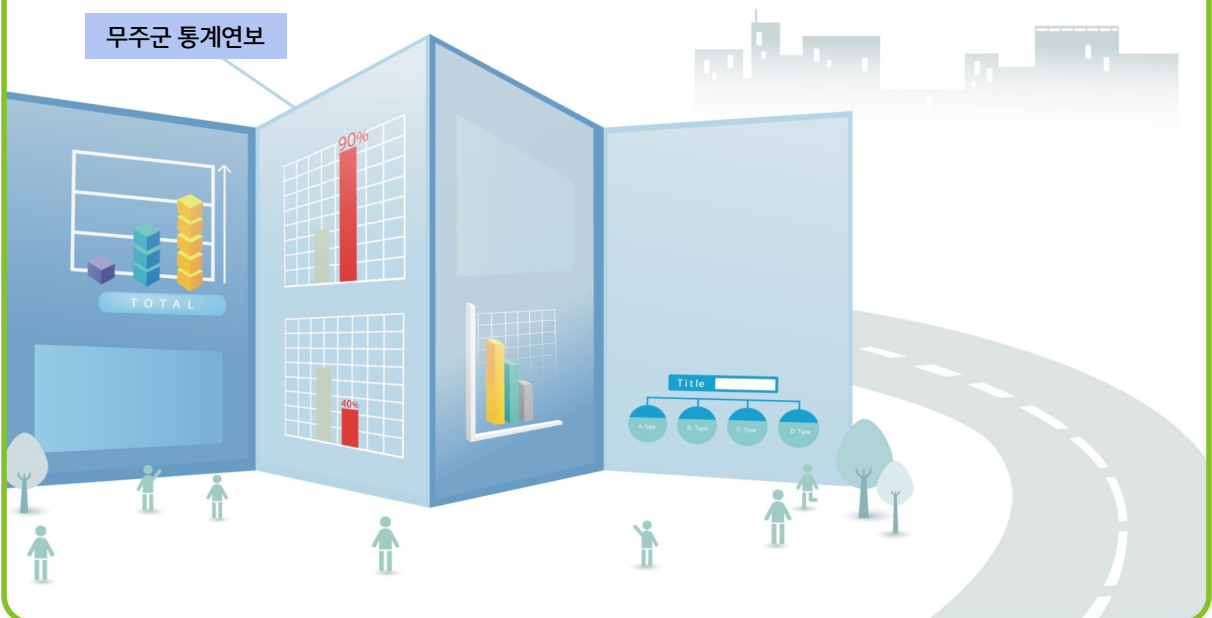
2. 토지 및 기후

Land and Climate



1. 위 치
2. 행정구역
3. 토지지목별현황
4. 일기일수
5. 기상개황
6. 강수량

무주군 통계연보



1. 위 치

소재지	단	경도와 위도의 극점		연장거리
		지명	극점	
전라북도 무주군 무주읍 주계로 97	동단	무풍면 금평리 산 156	동경 : 127 ° 54' 37.13" 북위 : 35 ° 56' 46.72"	동서간 34.9 km 남북간 31.0 km
	서단	부남면 대유리 산 203	동경 : 127 ° 31' 24.80" 북위 : 35 ° 58' 56.46"	
	남단	안성면 죽천리 산 177	동경 : 127 ° 41' 55.95" 북위 : 35 ° 47' 07.42"	
	북단	무주읍 내도리 산 2	동경 : 127 ° 38' 18.08" 북위 : 36 ° 03' 31.57"	
	중앙	적상면 괴목리 산 40-5	동경 : 127 ° 42' 58.91" 북위 : 35 ° 55' 41.28"	

전라북도 최동북단의 소백산맥 서사면에 위치하며 충청남·북도, 경상남·북도와 인접하여 5도의 경계를 이룬다. 서쪽은 진안군, 장수군과 인접하며 동쪽은 경북 김천시, 경남 거창군과 북쪽은 충남 금산군, 충북 영동군과 접하여 도계를 이룬다. 지리적 좌표는 동경 127 ° 54' ~ 127 ° 31' 북위 36 ° 04' ~ 35 ° 47'에 위치하여 우리나라 내륙지방 중에 가장 중심부를 점유한 산악지대이다.

Loaction

Location of County Hall	Extremity	Extreme of Longitude and Latitude		Gross distance
		Name of Location	Extreme Point	
97 Jugye-ro Muju-eup Muju-gun Jeollabuk-do	The Eastern End	Geumbyeong-ri san156 Mupung-myeon	East Longitude : 127° 54' 37.13" North longitude : 35° 56' 46.72"	East-West distance 34.9km South-North distance 31.0km
	The Western End	Daeyu-ri san203 Bunam-myeon	East Longitude : 127° 31' 24.80" North longitude : 35° 58' 56.46"	
	The Southern End	jukcheon-ri san177 Anseong-myeon	East Longitude : 127° 41' 55.95" North longitude : 35° 47' 07.42"	
	The Northern End	Naedo-ri san2 Muju-eup	East Longitude : 127° 38' 18.08" North longitude : 36° 03' 31.57"	
	Cental Point	Goemok-ri san40-5 Jeoksang-Myeon	East Longitude : 127° 42' 58.91" North longitude : 35° 55' 41.28"	

Muju is located in the Western side of Sobaek Mountains of Sloped to Western which is in the far east of Jeollabuk-do. Muju borders five different provinces. It is surrounded by Chungcheongnam-do, Chungcheongbuk-do, Gyeongsangnam-do, Gyeongsangbuk-do and Jeollabuk-do.

It is adjacent to Jinan-Gun and Jangsu-Gun to the West, to Gimcheon city of Gyeongbuk and Geochang-Gun of Gyeongnam to the East and to Geumsan-Gun of Chungnam and Yeongdong-Gun of Chungbuk to the north. It's geographic coordinates are Long. 127°54' ~ 127°31' E and Lat. 36°04' ~ 35°47' N. It is a mountainous area situated in the central part of the country.

2. 행정구역

단위 : 개

연 별 읍면별	면적 (km ²) Area (km ²)	구성비 (%) Composition	읍·면 ¹⁾ Eup, Myeon		
			읍 Eup	면 Myeon	
2007	631.91	100	6	1	5
2008	631.90	100	6	1	5
2009	631.89	100	6	1	5
2010	631.87	100	6	1	5
2011	631.85	100	6	1	5
2012	631.85	100	6	1	5
2013	631.85	100	6	1	5
2014	631.85	100	6	1	5
무주읍	79.41	12.6	1	1	-
무풍면	91.19	14.4	1	-	1
설천면	158.21	25.0	1	-	1
적상면	135.82	21.5	1	-	1
안성면	97.26	15.4	1	-	1
부남면	69.96	11.1	1	-	1

주 : 1) 법정동 제외됨 2) 법정리 제외됨

자료 : 행정지원과 (320-2232)

Area and Number of Administrative Units

unit : number

통 · 리 ²⁾ Tong and Ri			반 Ban	출장소 Branch office	Year & Eup, Myeon
통 Tong	리 Ri	행정 Admini strative		읍 · 면 Eup and Myeon	
	150	-	150	516	-
150	-	150	516	-	2008
150	-	150	516	-	2009
150	-	150	516	-	2010
150	-	150	516	-	2011
150	-	150	516	-	2012
150	-	150	516	-	2013
150	-	150	516		2014
31	-	31	153	-	Muju-Eup
17	-	17	55	-	Mupung-Myeon
25	-	25	75		Seolcheon-Myeon
25	-	25	75	-	Jeoksang-Myeon
36	-	36	115	-	Anseong-Myeon
16	-	16	43	-	Bunam-Myeon

Note: 1) Legal Dong excluded. 2) Legal Ri excluded.

3. 토지지목별 현황

단위 : m²

연 별 읍면별	계 Total	전 Dry Paddy	답 Rice paddy	과수원 Orchard
2007	631,905,504	36,582,009	33,560,532	252,109
2008	631,899,505	36,341,871	33,220,539	252,109
2009	631,886,914	36,299,562	32,939,463	260,667
2010	631,871,542.9	36,293,147.5	32,875,757.5	259,347.0
2011	631,845,724.5	36,935,387.5	32,537,988.9	263,409.0
2012	631,897,669.7	36,937,577.5	32,302,418.5	271,711.0
2013	631,866,978.7	37,032,867.3	32,038,204.1	270,878.0
2014	631,863,205.2	36,926,947.3	31,813,833.8	272,744.2
무주읍	79,396,734.3	6,353,888.0	4,024,913.2	65,638.0
무풍면	91,182,506.8	6,977,142.0	4,979,495.1	142,428.2
설천면	158,234,153.0	5,613,403.7	5,192,149.3	4,488.0
적상면	135,852,207.2	6,225,779.0	4,923,353.8	17,739.0
안성면	97,236,467.2	7,015,482.6	9,492,035.1	42,451.0
부남면	69,961,136.7	4,741,252.0	3,201,887.3	0.0

Area of Land Category

Unit : m²

목장용지 Pasture	임야 Forest field	광천지 Mineral spring site	대지 Building site	공장용지 factory site	Year & Eup, Myeon
1,419,455	517,224,808	-	5,429,747.0	198,591.6	2007
1,423,011	516,838,217	-	5,540,599.3	351,331.6	2008
1,414,197	516,531,132	-	5,599,033.1	357,501.6	2009
1,416,634.0	516,434,686.0	-	5,642,071.1	361,115.6	2010
1,413,508.0	515,248,736.0	-	5,714,290.1	364,394.6	2011
1,410,219.0	514,748,069.0	-	5,762,908.1	447,082.8	2012
1,376,811.0	514,114,709.7	-	5,837,095.4	447,082.8	2013
1,365,299.0	513,987,017.1	-	5,987,966.4	453,460.0	2014
299,030.0	58,022,770.0	-	1,274,589.8	241,803.8	Muju-Eup
350,224.0	73,132,599.4	-	804,168.7	14,680.0	Mupung-Myeon
74,307.0	138,539,888.4	-	1,391,303.1	2,036.0	Seolcheon-Myeon
248,563.0	116,356,854.0	-	888,771.3	39,566.0	Jeoksang-Myeon
301,799.0	71,750,596.3	-	1,145,009.5	151,907.2	Anseong-Myeon
91,376.0	56,184,309.0	-	484,124.0	3,467.0	Bunam-Myeon

3. 토지지목별 현황(속1)

단위 : m²

연 별 읍 면 별	학교용지 School site	주차장 Parking lot	주유소 용지 Service station site	창고용지 Ware-house site	도로 Road
2007	487,305.0	32,131.0	18,149.0	108,447.0	10,665,603.6
2008	487,305.0	32,793.0	30,382.0	121,494.0	11,252,203.6
2009	483,808.0	34,072.0	30,382.0	137,301.0	11,728,161.9
2010	483,457.0	36,495.0	30,382.0	147,711.0	11,785,271.9
2011	467,049.0	36,495.0	30,382.0	168,158.0	12,428,947.6
2012	469,810.0	39,431.0	30,583.0	173,375.0	12,671,394.6
2013	469,810.0	39,479.0	30,583.0	180,351.0	12,705,610.6
2014	458,887.0	49,031.8	30,735.0	184,565.1	12,952,619.2
무주읍	135,209.0	3,466.0	11,738.0	47,042.0	2,742,582.5
무풍면	76,583.0	5,538.8	2,437.0	56,013.1	1,953,732.4
설천면	83,887.0	27,027.0	1,865.0	14,714.0	1,529,448.7
적상면	59,686.0	6,278.0	8,548.0	25,385.0	2,835,964.5
안성면	80,033.0	2,821.0	4,498.0	26,533.0	2,592,176.5
부남면	23,489.0	3,901.0	1,649.0	14,878.0	1,298,714.6

Area of Land Category (Cont'd1)

Unit : m²

철도용지 Railway	하천 River	제방 Bank	구거 Ditch	유지 Marsh	Year & Eup, Myeon
-	17,316,196.7	304,856.9	4,316,614.2	1,191,737.0	2007
-	17,392,409.2	304,052.9	4,296,236.2	1,202,013.0	2008
-	17,388,243.1	304,052.9	4,303,599.2	1,202,013.0	2009
-	17,424,023.1	298,956.9	4,301,351.2	1,202,013.0	2010
-	17,546,101.5	292,912.9	4,293,459.3	1,202,013.0	2011
-	17,663,642.4	366,649.9	4,276,943.8	1,416,979.2	2012
-	17,659,707.4	368,179.9	4,286,122.4	1,424,308.6	2013
-	17,641,107.4	368,073.9	4,277,196.7	1,424,308.6	2014
-	4,962,056.9	161,195.0	488,430.1	39,632.2	Muju-Eup
-	1,497,773.1	34,367.0	740,099.0	136,347.0	Mupung-Myeon
-	3,653,842.5	17,858.6	530,706.7	26,595.0	Seolcheon-Myeon
-	2,298,705.6	29,728.0	847,982.0	732,367.0	Jeoksang-Myeon
-	1,786,095.3	42,701.0	1,476,895.7	440,590.4	Anseong-Myeon
-	3,442,634.0	82,224.3	193,083.2	48,777.0	Bunam-Myeon

3. 토지지목별 현황(속2)

단위 : m²

연 별 읍 면 별	양어장 Fish farm	수도용지 Water reservoirs	공원 Park	체육용지 Sporting facilities site	유원지 Recreation area
2007	3,306.0	36,670.0	6,075.8	1,210,455.0	-
2008	3,306.0	42,767.0	6,075.8	1,222,323.0	-
2009	3,306.0	42,767.0	6,075.8	1,292,343.0	-
2010	3,306.0	43,330.0	9,441.8	1,292,343.0	-
2011	3,306.0	43,987.0	10,408.8	1,295,979.0	-
2012	3,306.0	43,987.0	21,062.6	1,294,189.0	-
2013	3,306.0	43,987.0	21,062.6	1,928,563.6	-
2014	3,306.0	47,834.0	20,977.8	1,949,781.6	1,810.0
무주읍	-	23,240.0	20,010.8	45,747.0	-
무풍면	-	2,942.0	-	14,154.0	-
설천면	-	19,546.0	-	1,187,508.0	1,810.0
적상면	3,306.0	-	-	39,334.0	-
안성면	-	2,106.0	967.0	662,045.6	-
부남면	-	-	-	993.0	-

Area of Land Category (Cont'd2)

Unit : m²

종교용지 Religious site	사적지 Historical site	묘지 Grave yard	잡종지 Miscellaneous site	Year & Eup, Myeon
75,691.0	790.0	1,018,644.0	445,580.3	2007
77,250.0	790.0	1,015,845.0	444,581.3	2008
78,846.0	790.0	1,008,909.0	440,689.3	2009
81,685.0	790.0	1,008,641.0	439,586.3	2010
82,848.0	790.0	997,821.0	467,352.3	2011
82,848.0	790.0	996,231.0	466,461.3	2012
88,683.0	790.0	988,884.0	509,902.3	2013
93,458.0	790.0	1,011,134.0	540,321.3	2014
33,939.0	790.0	185,954.0	213,069.0	Muju-Eup
5,550.0	-	227,553.0	28,680.0	Mupung-Myeon
17,071.0	-	157,535.0	147,163.0	Seolcheon-Myeon
6,766.0	-	198,411.0	59,120.0	Jeoksang-Myeon
20,154.0	-	117,906.0	81,664.0	Anseong-Myeon
9,978.0	-	123,775.0	10,625.3	Bunam-Myeon

4. 일기일수

단위 : 일

연 별 월 별	맑음 Clear	구름조금 ¹⁾ Partly cloudy	구름많음 ²⁾ Mostly cloudy	흐림 Cloud	강수 Rain	서리 Frost
2007	225	42	80	-
2008	256	46	52	-
2009	245	52	50	-
2010	222	10	109	-
2011	245	30	89	-
2012	233	34	74	-
2013	249	21	79	-
2014	205			60	84	
1월	19			9		
2월	17			9		
3월	20			1	10	
4월	21			2	7	
5월	19			3	9	
6월	15			7	8	
7월	9			6	16	
8월	9			5	17	
9월	20			3	7	
10월	24			2	5	
11월	20			5	5	
12월	12			8		

주 : 1), 2) 2009년 추가 항목

자료 : 기술지원과(320-2846), 관측지점 : 농업기술센터 기상관측장비

Weather Days

Unit : day

안개 Fog	눈 Snow	뇌전 Thunder-Storm	폭풍 Gale	황사 Yellow sand	Year & Month
-	18	-	-	-	2007
-	12	-	-	-	2008
-	18	-	-	-	2009
-	23	-	-	-	2010
-	9	-	-	-	2011
-	26	-	-	-	2012
-	16	-	-	-	2013
	16				2014
	3				Jan.
	2				Feb.
					Mar.
					Apr.
					May
					June
					July
					Aug.
					Sept.
					Oct.
					Nov.
					Dec.

5. 기상개황

연 월 별	기온 (°C) Air temperature					강수량 (mm) Precipitation	상대습도(%) Relative humidity	
	평균	평균최고	최고극값	평균최저	최저극값		평균	최소
	Mean	Mean maximum	Highest	Mean minimum	Lowest		Mean	Lowest
2007	11.7	17.4	33.1	6.4	-12.8	1,227.5	53.2	21.9
2008	11.6	17.8	33.3	6.1	-14.1	680.0	71.1	41.3
2009	11.7	18.0	31.1	6.1	-13.9	877.7	70.8	43.1
2010	11.1	19.0	32.4	5.4	-16.3	1,230.0	69.3	53.3
2011	10.5	16.6	32.9	5.0	-17.6	1,385.9	47.8	35.2
2012	10.8	16.0	35.4	4.8	-19.3	1,341.7	72.0	53.0
2013	10.7	17.7	35.4	5.4	-19.3	1,204.2	71.2	50.6
2014	11.7	18.9	35.7	5.8	-13.6	1,022.0	69.3	38.3
1월	-1.7	6.3	13.4	-8.4	-13.6	2.0	65.2	29.4
2월	1.2	8.3	19.1	-5.1	-12.4	3.0	63.1	33.1
3월	6.3	13.7	25.7	-0.7	-10.0	98.5	63.2	28.9
4월	12.2	20.8	25.1	4.5	-3.1	78.5	60.6	27.9
5월	17.5	26.1	35.7	9.2	1.4	28.0	59.0	25.0
6월	21.3	27.5	30.6	16.3	12.7	66.0	70.2	42.8
7월	24.4	30.3	35.3	19.9	16.7	149.5	74.3	49.3
8월	22.9	27.9	31.8	19.5	12.5	323.5	80.6	58.3
9월	19.5	27.3	30.6	13.9	7.4	80.0	74.9	41.7
10월	13.0	21.4	26.6	6.5	0.1	104.0	73.2	37.9
11월	6.5	13.9	18.1	0.9	-5.7	65.0	74.8	42.1
12월	-2.3	3.5	9.4	-7.4	-13.6	24.0	72.4	42.9

주 : 평균기온 및 평균습도는 매일 3,6,9,12,15,18,21,24시의 8회 관측치를 산술평균한 것임 (97.1.1적용)
 자료 : 기술지원과 (320-2846) 관측지점 : 농업기술센터 기상관측장비

Summary of Meteorological Data

평균 해면기압 (hPa) Air pressure of mean sea level	이슬점온도 (℃) Mean dewpoint temperature	평균운량 (10%) Mean cloud	일조시간 Duration of sunshine	최심적설 (cm) Max. depth of snowfall	바람 (m/s) Windspeed			Year & Month
					평균 풍속 Mean	최대 풍속 Fastest	최대순간 속 Greatest gust	
-	-	-	2,745.4	22.0	1.4	12.2	-	2007
-	-	-	2,877.1	29.5	1.9	10.8	-	2008
-	-	-	2,374.8	7.0	1.5	9.2	-	2009
-	-	-	2,451.3	-	4.6	15.7	-	2010
-	-	-	2,190.4	3.5	4.5	51.6	-	2011
-	-	-	1,908.9	35.0	59.9	151.0	-	2012
-	-	-	2,154.4	58.0	2.0	15.3	-	2013
			1,344.4		0.9	9.9		2014
			30.5		1.0	4.3		Jan.
			26.2		1.1	4.0		Feb.
			61.5		1.2	5.2		Mar.
			96.3		1.1	4.4		Apr.
			182.5		1.2	4.4		May
			114.5		0.8	3.2		June
			117.2		0.8	11.3		July
			88.4		0.6	7.2		Aug.
			179.2		0.7	5.7		Sept.
			197.3		0.8	7.3		Oct.
			133.4		0.8	8.6		Nov.
			117.4		1.0	9.9		Dec.

Note: " Mean temp. " and "Mean humid" are arithmetic means of the figures from 8 observations a day at 3,6,9,12,15,18,21,24 O'clock (Since Jan.1, 1997)

6. 강 수 량

단위 : mm

연 별 읍면별	합계	1월	2월	3월	4월	5월	6월
	Total	Jan.	Feb.	Mar.	Apr.	May	June
2007	1,212.7	6.2	50.5	92.7	21.0	78.8	128.5
2008	708.8	33.5	4.7	22.3	35.3	76.3	151.3
2009	949.8	14.8	28.0	29.8	25.0	111.3	117.8
2010	1,305.3	5.7	41.2	27.7	73.7	115.0	105.3
2011	1,283.2	5.1	43.6	26.7	76.1	102.6	107.6
2012	1,281.6	4.1	5.7	75.4	60.1	24.7	91.0
2013	985.0	27.4	36.1	59.7	74.1	64.4	70.0
2014	1,086.0	2.4	3.0	96.3	81.3	21.5	108.2
무주읍	995.0	2.0	2.0	101.0	74.0	21.0	62.0
무풍면	1,205.0	2.0	10.0	94.0	116.0	19.0	150.0
설천면	1,179.0	1.0	3.0	99.0	84.0	25.0	199.0
적상면	1,083.0	4.0	1.0	106.0	80.0	23.0	48.0
안성면	1,041.0	2.5	1.0	63.5	59.0	18.0	124.0
부남면	1,013.0	3.0	1.0	114.0	75.0	23.0	66.0

자료 : 안전재난과 (safe.muju.go.kr), 관측지점 : 읍·면 주민자치센터

Precipitation

unit : mm

7월	8월	9월	10월	11월	12월	Year & Eup, Myeon
July	Aug.	Sept.	Oct.	Nov.	Dec.	
194.7	212.3	390.7	16.5	1.8	19.0	2007
162.8	132.8	31.8	32.5	13.7	11.7	2008
380.7	123.8	43.5	19.3	23.5	32.2	2009
415.8	312.7	55.5	56.8	90.3	5.7	2009
403.9	314.1	52.1	55.9	90.1	5.4	2011
225.0	376.0	311.0	49.7	34.6	24.3	2012
252.0	182.4	92.9	40.4	56.9	28.7	2013
151.0	343.8	79.3	108.2	65.5	25.5	2014
158.0	306.0	75.0	105.0	63.0	26.0	Muju-Eup
145.0	405.0	77.0	112.0	60.0	15.0	Mupung-Myeon
152.0	355.0	76.0	104.0	63.0	18.0	Seolcheon-Myeon
176.0	343.0	86.0	112.0	74.0	30.0	Jeoksang-Myeon
120.0	366.0	84.0	103.0	65.0	35.0	Anseong-Myeon
155.0	288.0	78.0	113.0	68.0	29.0	Bunam-Myeon